

- Manufactured to toolroom quality ● Self lubricating
- Self priming : Maximum vacuum - 600/650 Hg
- Maximum liquid temperature - 200°C
- Min. & Max. liquid viscosity 10 - 455 centistokes
- Suitable for LDO, FO, HSD & LSHS
- Available with/without pressure regulating valve & external by pass
- Direction of rotation - clock wise/anticlock wise (looking from shaft end)
- Wide pressure range RPM - 1400/2800

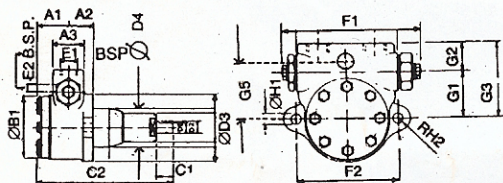
- Capacity/range : 150-6,000 LPH at maximum head of 30 Kg/cm²g
- Positive displacement at constant pressure
- For Non-corrosive, Non-abrasive liquids
- High precision - ensure desired output
- Compact and easy to install in any position - saves on space and time
- Long trouble free service - minimum wear
- Mechanical shaft seal - no leakage of liquid
- Quite and vibration free running

Flodyne Gear Pumps have wide applications in : ● Railway ● Diesel Engines ● Hydraulic drives ● Transformers ● Vegetable oil Processing ● Boilers ● Oil Burners ● Machine Tools ● Lubricating Oil ● Furnaces ● Pressure & Transfer Pumps ● LPG Pumpset : The pumps can be supplied as a complete Assembly with Electric Drive, Base Plate and Accessories.

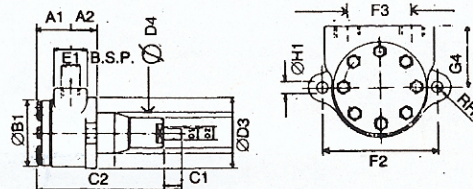
Pump Model	Output l/h	Pump Model	Output l/h	Pump Model	Output l/h
AO 15	150	B1	1000	C-300	3000
AO 3	300	B15	1500	C-450	4500
AO 45	450	B2	2000	C-600	6000
AO 6	600	B25	2500		

Outputs are calculated at pump r.p.m. 1440 with oil of 32 centistoke viscosity (at 37.5°C) at normal working temperature and 10Kg/Cm²g pressure. AO15, AO3 & AO45 are also suitable for operation at 2800 r.p.m. Pumps with output capacities above 6,000 LPH are custom builds.

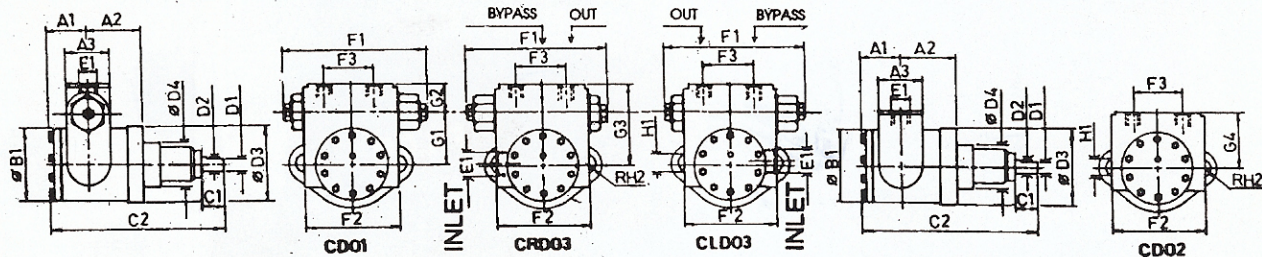
PUMP WITH PRESSURE REGULATING VALVE



PUMP WITHOUT PRESSURE REGULATING VALVE



MODEL	A1	A2	A3	B1	C1	C2	D1	D2	D3	E1	E2	F1	F2	G1	G2	G3	G4	H1	RH2	D4	F3	G5
A	41	29	39	70	23	146	10.5	12	81	1/2"	1/4"	143	92.5	47	28	75	43	10.5	14	54	43.5	47
B	49	39	47	96	27	214	16.3	18	104	3/4"	1/2"	159	120	55.25	34.75	90	66	13	15	60	67	64



MODEL	A1	A2	A3	B1	C1	C2	D1	D2	D3	E1	F1	F2	G1	G2	G3	G4	H1	RH2	D4	F3		
C	62.5	85	70	115	37	274.5	20	22	120	1"	211	150	80	40	120	91	14.5	15	80	80		

DO1 - pump with pressure regulating valve **DO2** - pump without pressure regulating valve **DO3** - pump with pressure regulating valve and bypass arrangement - A Type model - 1/4" x 3/8" Nipple & B Type model - 1/2" x 3/4" Nipple **DO4** - Pump without pressure regulating valve for railways (WDM2 - booster & governor pump; YDM.4A - booster pump)