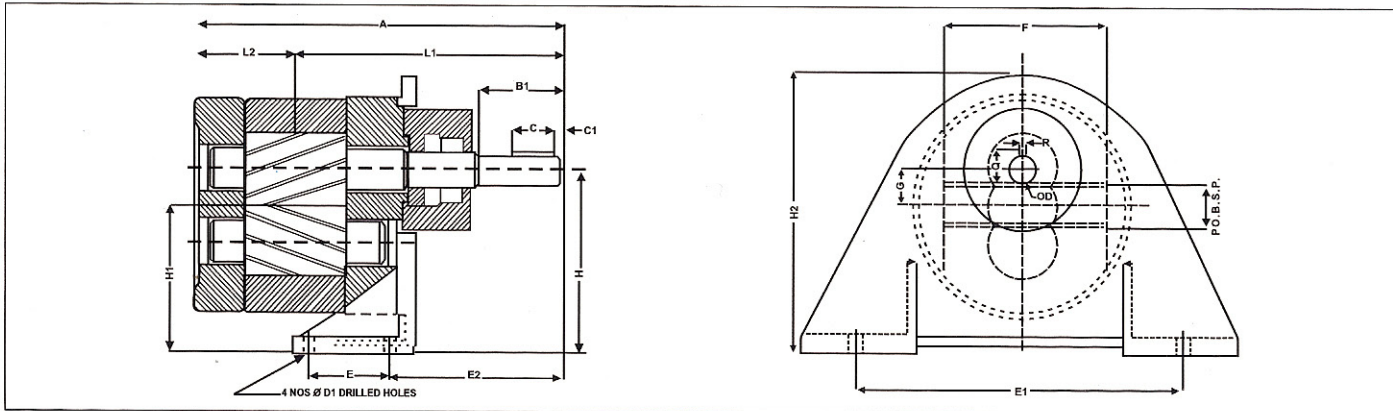


Rotary gear pump type **FG - SS** is self priming bi directional positive displacement pumps in all ss-316 construction , case nitrided shafts & gear supported on either side of 4, nos. teflon coated self lubricated dry brush bearings. This pumps are simple three construction, easy cleanabel,back cover can simply be removed by 4, nos hex bolt.

| MODEL | PORT SIZE BSP | CAPCITY at 1400 RPM | | | POWER CONSUMPTION IN BHP AT DIFFERENTIAL PRESSURE OF 'X'Kg/cm WITH 1500 SSU VISCOCITY | | | | | | | | | | APROX WT. IN Kg |
|-----------|-----------------|---------------------|-------|--------|---|------|------|------|------|------|------|------|------|------|-----------------|
| | | M3/HR | LPM | US GPM | 'X'1 | 2 | 3 | 4 | 5 | 6 | 7 | 8 | 9 | 10 | |
| FG SS-025 | 1/4" x 1/4" | 1.30 | 5.00 | 0.30 | 0.10 | 0.11 | 0.12 | 0.13 | 0.14 | 0.15 | 0.16 | 0.17 | 0.18 | 0.19 | 1.80 |
| | | 2.20 | 8.33 | 0.50 | 0.15 | 0.17 | 0.19 | 0.22 | 0.24 | 0.26 | 0.28 | 0.30 | 0.33 | 0.36 | 2.00 |
| FG SS-040 | 3/8" x 3/8" | 4.40 | 16.66 | 1.00 | 0.25 | 0.30 | 0.34 | 0.39 | 0.43 | 0.48 | 0.54 | 0.60 | 0.65 | 0.72 | 3.00 |
| FG SS-050 | 1/2" x 1/2" | 6.60 | 25.00 | 1.50 | 0.32 | 0.38 | 0.44 | 0.49 | 0.56 | 0.61 | 0.70 | 0.78 | 0.85 | 0.94 | 3.50 |
| FG SS-075 | 3/4" x 3/4" | 8.80 | 33.33 | 2.00 | 0.35 | 0.42 | 0.50 | 0.58 | 0.66 | 0.75 | 0.82 | 0.92 | 1.00 | 1.10 | 4.50 |
| FG SS-100 | 1" x 1" | 13.20 | 50.00 | 3.00 | 0.40 | 0.50 | 0.60 | 0.75 | 0.89 | 1.04 | 1.17 | 1.29 | 1.45 | 1.60 | 5.00 |
| FG SS-125 | 1 1/4" x 1 1/4" | 26.40 | 100 | 6.00 | 0.80 | 1.16 | 1.54 | 1.95 | 2.20 | 2.42 | 2.65 | 2.92 | 3.15 | 3.32 | 6.00 |
| FG SS-150 | 1 1/2" x 1 1/2" | 33.00 | 125 | 7.50 | 1.00 | 1.35 | 1.82 | 2.20 | 2.65 | 3.02 | 3.34 | 3.73 | 4.12 | 4.46 | 10.500 |
| FG SS-200 | 2" x 2" | 39.60 | 150 | 9.00 | 1.33 | 1.88 | 2.46 | 2.95 | 3.35 | 3.85 | 4.28 | 4.72 | 5.20 | 5.80 | 20.500 |
| | | 52.80 | 200 | 12.00 | 1.80 | 2.25 | 2.92 | 3.55 | 4.20 | 4.75 | 5.28 | 5.98 | 6.45 | 7.10 | 24.00 |



| SIZE | A | B1 | C | C1 | D | D1 | E | E1 | E2 | F | G | H | H1 | H2 | L1 | L2 | P | Q | PQ.B.S.P. |
|------|-----|----|----|----|------|------|------|-----|------|------|----|-----|------|-----|------|------|---|------|-----------------|
| 025 | 128 | 25 | 17 | 3 | 11.5 | 8 | 40 | 120 | 72 | 54 | 12 | 63 | 50.5 | 101 | 94 | 35 | 3 | 13 | 1/4" x 1/4" |
| 040 | 134 | 25 | 17 | 3 | 11.5 | 8 | 50 | 125 | 75 | 61 | 14 | 80 | 66 | 121 | 98.5 | 35.5 | 4 | 13 | 3/8" x 3/8" |
| 050 | 146 | 25 | 17 | 3 | 11.5 | 8 | 50 | 125 | 77 | 61 | 14 | 80 | 66 | 121 | 104 | 42 | 4 | 13 | 1/2" x 1/2" |
| 075 | 169 | 35 | 25 | 3 | 14 | 10.5 | 53.5 | 140 | 82.5 | 72.5 | 17 | 100 | 83 | 143 | 123 | 46 | 5 | 16 | 3/4" x 3/4" |
| 100 | 179 | 35 | 25 | 3 | 14 | 10.5 | 53.5 | 140 | 92.5 | 72.5 | 17 | 100 | 83 | 143 | 128 | 51 | 5 | 16 | 1" x 1" |
| 125 | 212 | 38 | 30 | 3 | 18 | 12 | 50 | 178 | 98.5 | 90 | 21 | 112 | 91 | 161 | 146 | 66 | 6 | 20.5 | 1 1/4" x 1 1/4" |
| 150 | 229 | 38 | 30 | 3 | 18 | 12 | 50 | 178 | 101 | 90 | 21 | 112 | 91 | 161 | 156 | 73 | 6 | 20.5 | 1 1/2" x 1 1/2" |
| 200 | 259 | 40 | 30 | 5 | 24 | 14 | 75 | 190 | 107 | 103 | 25 | 132 | 107 | 132 | 174 | 85 | 8 | 27 | 2" x 2" |
| 200 | 283 | 40 | 30 | 5 | 24 | 14 | 75 | 190 | 107 | 103 | 25 | 132 | 107 | 187 | 186 | 97 | 8 | 27 | 2" x 2" |

| | | | | | | | | |
|----|-------------|----------|----|------------------|---------------|----|----------|--------------------|
| 01 | PUMP BODY | S.S. 316 | 05 | R.H. & L.H. GEAR | S.S. 316 | 09 | BRACKET | C.IGR - 20IS - 210 |
| 02 | FRONT COVER | S.S. 316 | 06 | ROTAR SHAFT | S.S. 316 | 10 | SEALING | Z'PACK TEFLON |
| 03 | BACK COVER | S.S. 316 | 07 | STATOR SHAFT | S.S. 316 | 11 | FASTNERS | AISI-SS-316 |
| 04 | SEAL COVER | S.S.316 | 08 | BUSH | TEFLON COATED | 12 | PACKING | TEFLON |

All **FG-SS** Series pumps are designed to run at 1400 RPM for liquid having low viscosity up to 500 cst. Pump size up to 1" can safely be run at 1440 RPM even at higher viscosity up to 1000 cst with additional h.p. for size above 1" reduce speed to 960 rpm for viscosity up to 1000 cst for higher viscosity consult the manufacturer to avoid cavitation & over loading.

This **FG-SS** series pumps are ideally suitable for handling viscous corrosive chemicals like mild acid , fenol ect. in chemical industries , food products like , Ghee, butter, vegetable source ,kanji, fruit, fruit pulp, ice cream, vegetable oil, these are also used for handling printing ink dyes, slurry, kerosine, neptha etc.